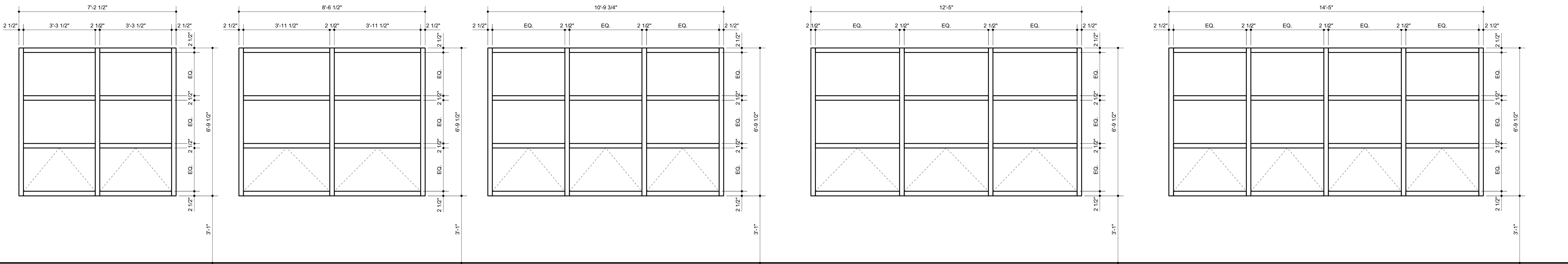


Aluminum Door Frame 'AL5'

Fire Rated Door Frame 'FR1'

Fire Rated Door Frame 'FR2'



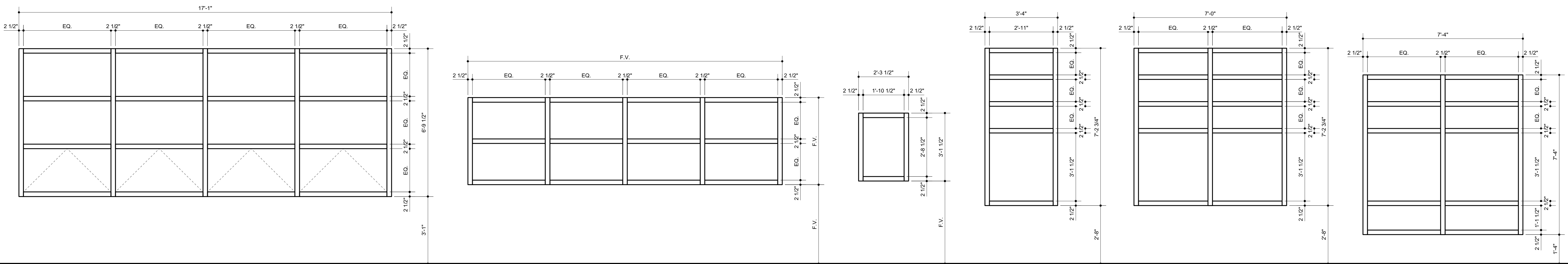
Curtain Wall (A)

Curtain Wall (B)

Curtain Wall (C)

Curtain Wall (D)

Curtain Wall (E)



Curtain Wall (F)

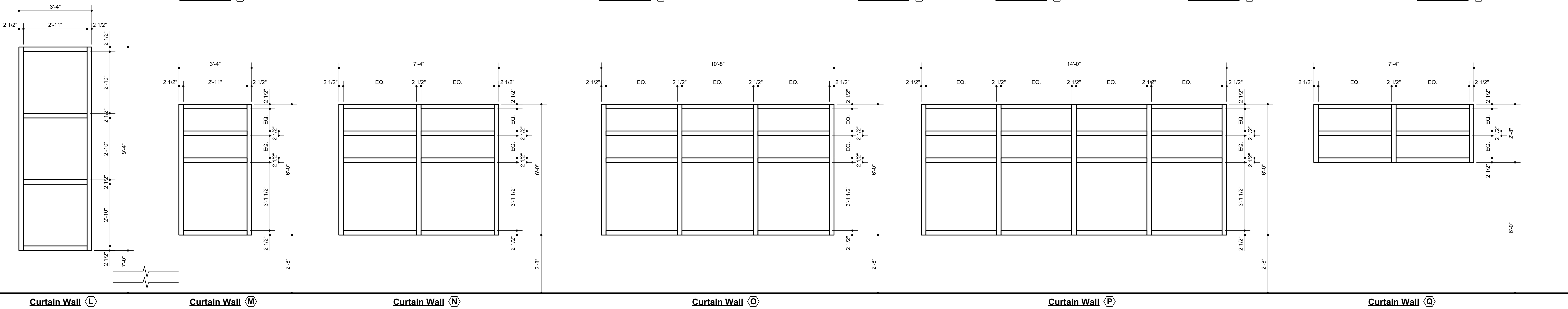
Curtain Wall (G)

Curtain Wall (H)

Curtain Wall (I)

Curtain Wall (J)

Curtain Wall (K)



Curtain Wall (L)

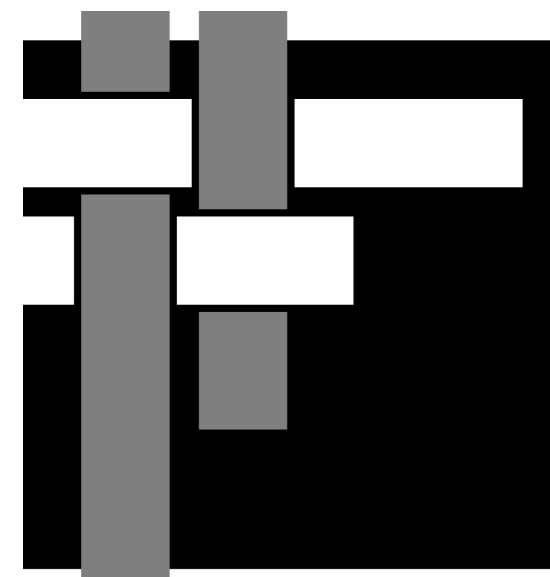
Curtain Wall (M)

Curtain Wall (N)

Curtain Wall (O)

Curtain Wall (P)

Curtain Wall (Q)

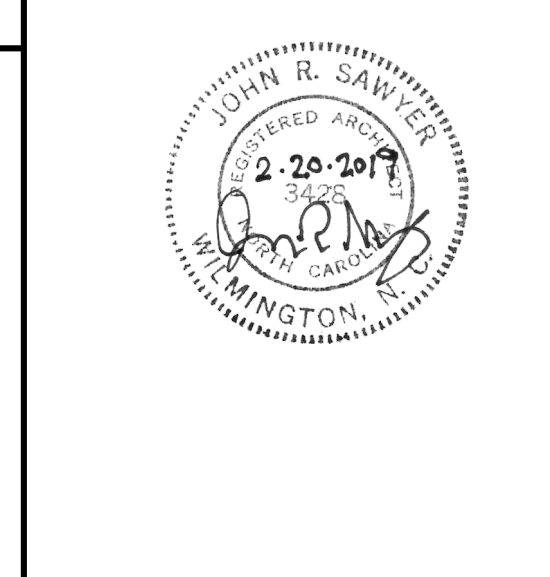
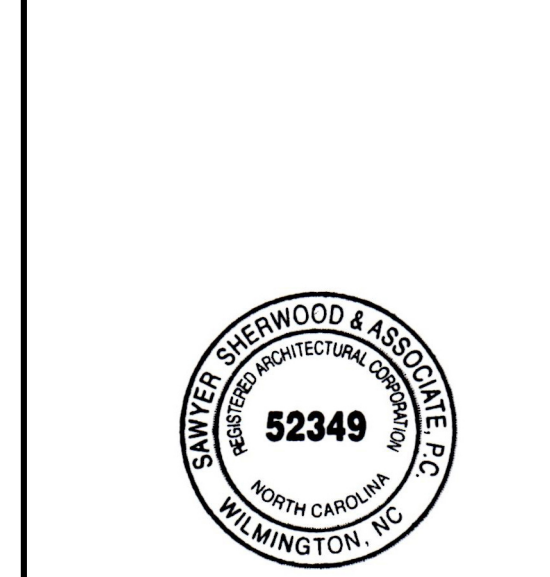


**SAWYER
SHERWOOD
& ASSOCIATE
ARCHITECTURE**
124 Market St. Wilmington, NC 28401
910 762-0892 s2a3.com

PARAMOUNTE
122 CINEMA DRIVE WILMINGTON, NC 28403
Office: (910) 791-6707
www.paramounte-eng.com

WOODS ENGINEERING
Consulting Structural Engineers
254 North Front Street Phone: 910.343.8007
Suite 201 Fax: 910.343.8088
Wilmington, NC 28401 www.woodseng.com

CHEATHAM AND ASSOCIATES, P.A.
CONSULTING ENGINEERS
3612 ENTERPRISE DRIVE
WILMINGTON, NORTH CAROLINA 28405
PHONE: (910) 452-4210
FAX: (910) 452-4211
OFFICE@CHEATHAMPA.COM
WWW.CHEATHAMPA.COM
NC LICENSE# C-1073
JOB # 18049
SKA
CONSULTING ENGINEERS
300 Pomona Drive
Greensboro, NC 27407
Phone: 336-855-0993
www.skaeng.com



**Wrightsville
Beach
Elementary
School Addition
& Renovation**

220 Coral Drive
Wrightsville Beach, NC

Construction Drawings
February 20, 2019

Revisions:
ADDENDUM #1: 3/19/19

Door Frame &
Window
Elevations